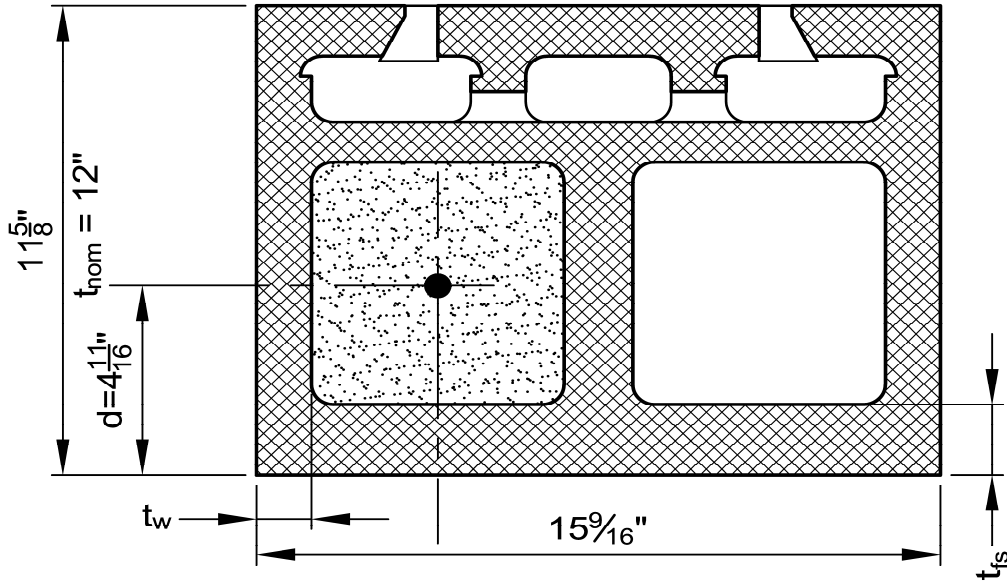


SoundBlox: 12" RSC/RF4
 7-5/8" x 11-5/8" x 15-9/16"



Concrete Masonry Wall Properties

t_{nom}	12 in
Bar Size	4
t_{fs}	1.625 in
t_w	1.25 in

Steel Reinforcement Properties

A_s	0.2 in ²
E_s	29,000,000 psi
f_y	60,000 psi
F_s	24,000 psi

Partially Grouted Masonry

Out-of-Plane Resisting Moment and Shear (Allowable Moment is based on the effective depth taken from the non-acoustic face of the masonry block)

For Effective Depth, $d = 4.69$ in

Spacing (in)	f'_m (psi)	1350		1500		2000		3000	
	A_s' (in ² /ft)	M_r (in-lb/ft)	V_r (lb/ft)	M_r (in-lb/ft)	V_r (lb/ft)	M_r (in-lb/ft)	V_r (lb/ft)	M_r (in-lb/ft)	V_r (lb/ft)
8	0.30	20,265	2,067	21,759	2,179	26,322	2,516	30,532	2,813
16	0.15	15,194	2,067	15,266	2,179	15,450	2,516	15,680	2,813
24	0.10	10,305	2,067	10,347	2,179	10,453	2,516	10,585	2,813
32	0.08	7,812	2,067	7,840	2,179	7,912	2,516	8,000	2,813
40	0.06	6,296	2,067	6,317	2,179	6,370	2,516	6,434	2,813
48	0.05	5,277	2,067	5,293	2,179	5,333	2,516	5,383	2,813
56	0.04	4,543	2,067	4,556	2,179	4,589	2,516	4,629	2,813
64	0.04	3,989	2,067	4,000	2,179	4,027	2,516	4,060	2,813
72	0.03	3,557	2,067	3,566	2,179	3,589	2,516	3,617	2,813
80	0.03	3,201	1,860	3,209	1,961	3,230	2,264	3,255	2,531
88	0.03	2,910	1,691	2,917	1,782	2,936	2,058	2,959	2,301
96	0.03	2,668	1,550	2,674	1,634	2,692	1,887	2,713	2,109

Concrete Masonry Wall Properties

t_{nom} 12 in
 Bar Size 5
 t_{fs} 1.625 in
 t_w 1.25 in

Steel Reinforcement Properties

A_s 0.31 in²
 E_s 29,000,000 psi
 f_y 60,000 psi
 F_s 24,000 psi

Partially Grouted Masonry

Out-of-Plane Resisting Moment and Shear (Allowable Moment is based on the effective depth taken from the non-acoustic face of the masonry block)

For Effective Depth, $d = 4.69$ in

Spacing (in)	f'_m (psi)	1350		1500		2000		3000	
	A_s' (in ² /ft)	M_r (in-lb/ft)	V_r (lb/ft)	M_r (in-lb/ft)	V_r (lb/ft)	M_r (in-lb/ft)	V_r (lb/ft)	M_r (in-lb/ft)	V_r (lb/ft)
8	0.47	23,152	2,067	24,948	2,179	30,458	2,516	39,934	2,813
16	0.23	18,628	2,067	19,967	2,179	23,502	2,516	23,917	2,813
24	0.16	15,677	2,067	15,752	2,179	15,944	2,516	16,185	2,813
32	0.12	11,907	2,067	11,958	2,179	12,089	2,516	12,251	2,813
40	0.09	9,611	2,067	9,649	2,179	9,745	2,516	9,864	2,813
48	0.08	8,063	2,067	8,092	2,179	8,168	2,516	8,260	2,813
56	0.07	6,948	2,067	6,972	2,179	7,032	2,516	7,107	2,813
64	0.06	6,106	2,067	6,126	2,179	6,176	2,516	6,238	2,813
72	0.05	5,447	2,067	5,464	2,179	5,507	2,516	5,559	2,813
80	0.05	4,902	1,860	4,918	1,961	4,956	2,264	5,003	2,531
88	0.04	4,457	1,691	4,471	1,782	4,505	2,058	4,548	2,301
96	0.04	4,085	1,550	4,098	1,634	4,130	1,887	4,169	2,109

Concrete Masonry Wall Properties

t_{nom} 12 in
 Bar Size 6
 t_{fs} 1.625 in
 t_w 1.25 in

Steel Reinforcement Properties

A_s 0.44 in²
 E_s 29,000,000 psi
 f_y 60,000 psi
 F_s 24,000 psi

Partially Grouted Masonry

Out-of-Plane Resisting Moment and Shear (Allowable Moment is based on the effective depth taken from the non-acoustic face of the masonry block)

For Effective Depth, $d = 4.69$ in

Spacing (in)	f'_m (psi)	1350		1500		2000		3000	
	A_s' (in ² /ft)	M_r (in-lb/ft)	V_r (lb/ft)	M_r (in-lb/ft)	V_r (lb/ft)	M_r (in-lb/ft)	V_r (lb/ft)	M_r (in-lb/ft)	V_r (lb/ft)
8	0.66	25,465	2,067	27,526	2,179	33,879	2,516	44,888	2,813
16	0.33	20,790	2,067	22,384	2,179	27,201	2,516	33,443	2,813
24	0.22	18,283	2,067	19,587	2,179	22,295	2,516	22,680	2,813
32	0.17	16,523	2,067	16,721	2,179	16,930	2,516	17,192	2,813
40	0.13	13,447	2,067	13,508	2,179	13,663	2,516	13,856	2,813
48	0.11	11,293	2,067	11,340	2,179	11,461	2,516	11,612	2,813
56	0.09	9,738	2,067	9,777	2,179	9,875	2,516	9,997	2,813
64	0.08	8,564	2,067	8,596	2,179	8,678	2,516	8,779	2,813
72	0.07	7,644	2,067	7,672	2,179	7,741	2,516	7,827	2,813
80	0.07	6,880	1,860	6,904	1,961	6,967	2,264	7,044	2,531
88	0.06	6,254	1,691	6,277	1,782	6,334	2,058	6,404	2,301
96	0.06	5,733	1,550	5,754	1,634	5,806	1,887	5,870	2,109

Concrete Masonry Wall Properties

t_{nom} 12 in
 Bar Size 7
 t_{fs} 1.625 in
 t_w 1.25 in

Steel Reinforcement Properties

A_s 0.6 in²
 E_s 29,000,000 psi
 f_y 60,000 psi
 F_s 24,000 psi

Partially Grouted Masonry

Out-of-Plane Resisting Moment and Shear (Allowable Moment is based on the effective depth taken from the non-acoustic face of the masonry block)

For Effective Depth, $d = 4.69$ in

Spacing (in)	f'_m (psi)	1350		1500		2000		3000	
	A_s' (in ² /ft)	M_r (in-lb/ft)	V_r (lb/ft)	M_r (in-lb/ft)	V_r (lb/ft)	M_r (in-lb/ft)	V_r (lb/ft)	M_r (in-lb/ft)	V_r (lb/ft)
8	0.90	27,459	2,067	29,767	2,179	36,920	2,516	49,414	2,813
16	0.45	22,642	2,067	24,469	2,179	30,049	2,516	39,482	2,813
24	0.30	20,185	2,067	21,719	2,179	26,322	2,516	30,532	2,813
32	0.23	18,423	2,067	19,741	2,179	22,779	2,516	23,175	2,813
40	0.18	17,046	2,067	18,169	2,179	18,403	2,516	18,697	2,813
48	0.15	15,194	2,067	15,266	2,179	15,450	2,516	15,680	2,813
56	0.13	13,113	2,067	13,172	2,179	13,321	2,516	13,508	2,813
64	0.11	11,539	2,067	11,588	2,179	11,713	2,516	11,868	2,813
72	0.10	10,305	2,067	10,347	2,179	10,453	2,516	10,585	2,813
80	0.09	9,275	1,860	9,312	1,961	9,408	2,264	9,527	2,531
88	0.08	8,431	1,691	8,466	1,782	8,553	2,058	8,661	2,301
96	0.08	7,729	1,550	7,760	1,634	7,840	1,887	7,939	2,109

Concrete Masonry Wall Properties

t_{nom} 12 in
 Bar Size 8
 t_{fs} 1.625 in
 t_w 1.25 in

Steel Reinforcement Properties

A_s 0.79 in²
 E_s 29,000,000 psi
 f_y 60,000 psi
 F_s 24,000 psi

Partially Grouted Masonry

Out-of-Plane Resisting Moment and Shear (Allowable Moment is based on the effective depth taken from the non-acoustic face of the masonry block)

For Effective Depth, $d = 4.69$ in

Spacing (in)	f'_m (psi)	1350		1500		2000		3000	
	A_s' (in ² /ft)	M_r (in-lb/ft)	V_r (lb/ft)	M_r (in-lb/ft)	V_r (lb/ft)	M_r (in-lb/ft)	V_r (lb/ft)	M_r (in-lb/ft)	V_r (lb/ft)
8	1.19	29,146	2,067	31,679	2,179	39,570	2,516	53,467	2,813
16	0.59	24,207	2,067	26,242	2,179	32,514	2,516	43,287	2,813
24	0.40	21,794	2,067	23,542	2,179	28,845	2,516	37,711	2,813
32	0.30	20,098	2,067	21,629	2,179	26,207	2,516	30,167	2,813
40	0.24	18,744	2,067	20,100	2,179	23,936	2,516	24,361	2,813
48	0.20	17,613	2,067	18,855	2,179	20,112	2,516	20,445	2,813
56	0.17	16,676	2,067	17,136	2,179	17,352	2,516	17,623	2,813
64	0.15	15,013	2,067	15,084	2,179	15,265	2,516	15,491	2,813
72	0.13	13,415	2,067	13,475	2,179	13,630	2,516	13,823	2,813
80	0.12	12,073	1,860	12,128	1,961	12,267	2,264	12,440	2,531
88	0.11	10,976	1,691	11,025	1,782	11,152	2,058	11,309	2,301
96	0.10	10,061	1,550	10,107	1,634	10,222	1,887	10,367	2,109